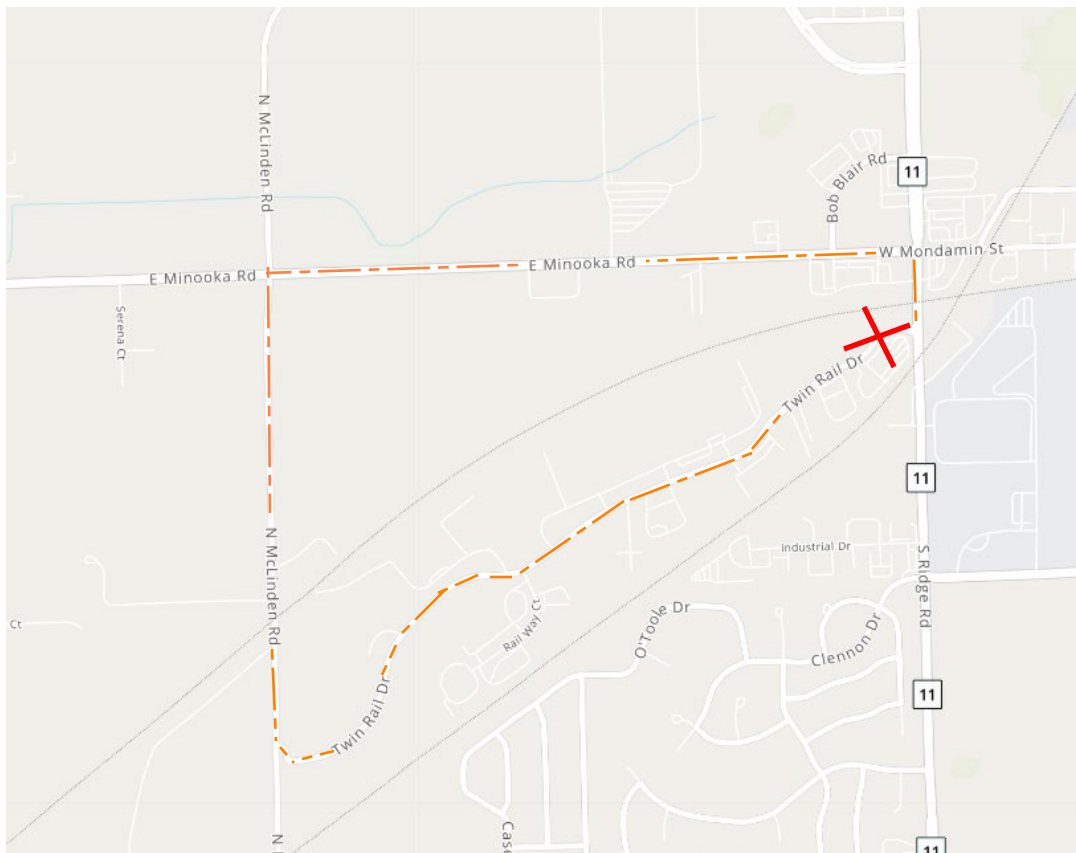


ROAD CLOSURE NOTICE

Access to Twin Rail Drive from Ridge Road will be closed for 25 days starting August 10th. Truck traffic will be routed to McLindon Road. Detour routes will be posted. Simultaneously, the construction activity on Ridge Road will cause lane shifts at the Twin Rail intersection. Ridge Road will remain open.



We appreciate the residents' patience during the construction activities and apologize for any inconvenience.